

London Waterway Expansion



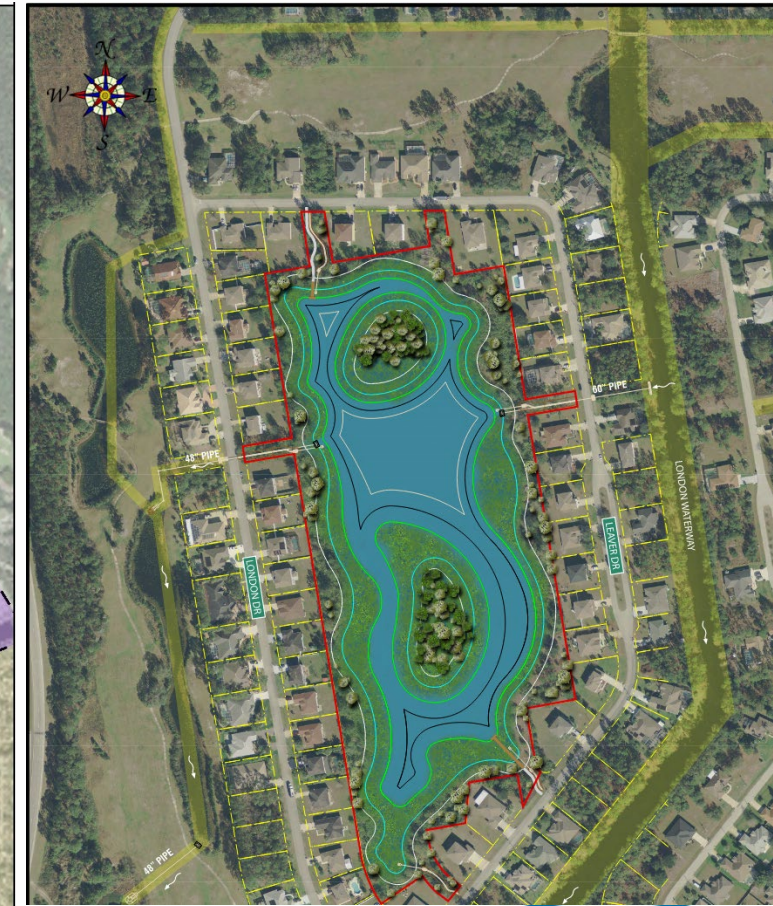
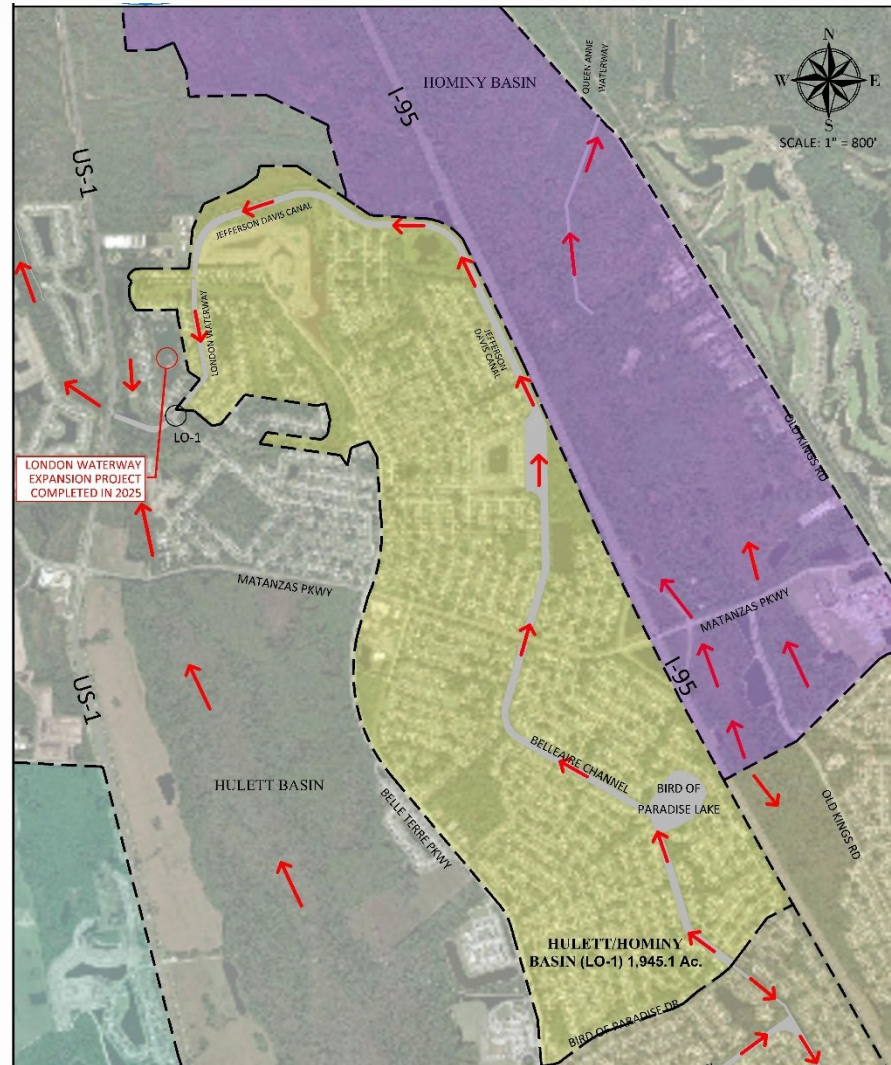


LONDON WATERWAY PROJECT PRE DEVELOPMENT



Project Background

- Identified as an impactful project on the City's 2019 Stormwater Master Plan.
- Compromised tailwater conditions at Hulett Basin's outfall created a need for added capacity.
- Project would add 25% of desired capacity, increase flood protection, improve water quality, and provide a passive park with boardwalks & two (2) overlook pavilions with benches.



PROJECT CHALLENGES

- **Project Location**
 - Utilize City-Owned Land vs. Acquiring Privately-Owned Parcels
- **Purchase Privately-Owned Parcels**
 - Costly to Purchase Outright – Required negotiating development rights
 - Negotiations with Owners/Developers Did Not Succeed
- **City Owned Parcels had Limiting Conditions**
 - City-Owned Land Seemed Best Option, But Came With Limiting Conditions:
 - Donated by Private Developer Years Ago
 - 35' Setbacks – Limited Overall Capacity Benefits
 - Only Recreational Development Allowed – Added Costs



PROJECT CHALLENGES (Continued)

- **Neighborhood Meetings and Input**
 - Neighbor's Concerns About Loss of Privacy, Increased Traffic, Wildlife (Gators)
 - Public Perception: Residents Questioned City's Intentions – Was Pond to Serve Private Development?
- **Environmental Concerns**
 - Wetlands, Gofer Tortoises – Added Mitigation and Tortoise Relocation Costs
- **Design/Permitting & Funding**
 - High Cost of excavation material disposal
 - Design adjustments to lower construction costs
 - Reuse Excavated Material on Future City Project – Saved nearly \$4 Million (Combined)
 - Post Covid Project – Bids came in significantly higher than cost estimates
 - Allocating additional funds (ARPA) to get project completed



PROJECT CHALLENGES (Continued)

- **Construction**
 - Project in close vicinity to residential properties
 - Encountered Issues included: Noise, Start Time, and Volume of Truck Movement
 - Construction impact to roads, driveways, and public/private property
 - Hurricane came through in the middle of Construction
 - Road Flooding During Construction



PROJECT OVERVIEW

- 13+/- Acre Lake within city-owned properties
- Includes two (2) overlook docks, two (2) islands within the lake to remain natural, and stormwater infrastructure to connect to the London Waterway & the outfall near US1.

PROJECT BENEFITS

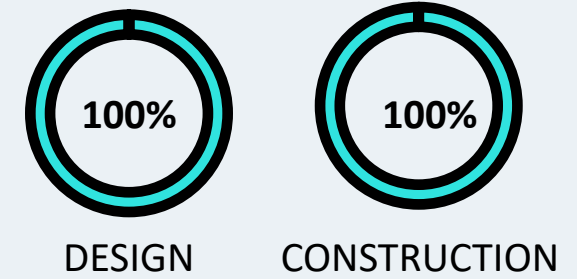
- Provide flood storage to increase flood protection along neighborhoods adjacent to the London Waterway (Pond provides over 21 million gallons of capacity to the canal system).
- Improve water quality in receiving waters with stormwater treatment.
- Improve stormwater conveyance along immediately adjacent neighborhood.
- Provide fill material for the Maintenance Operations Center (over \$4 million in savings to the city).

FUNDING

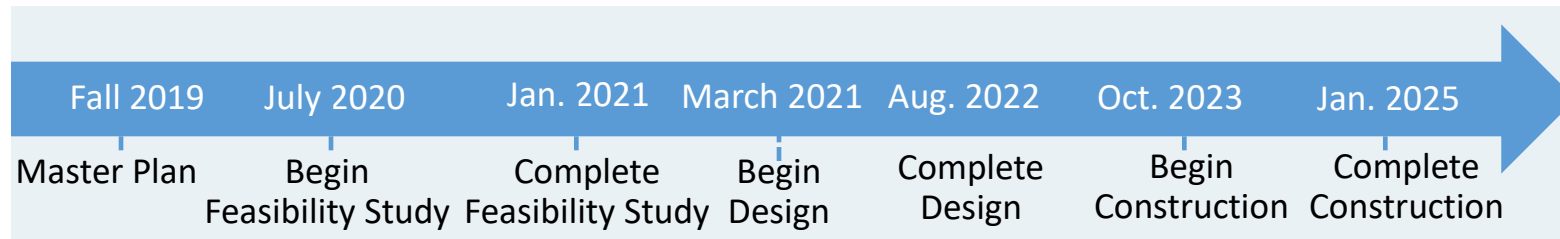
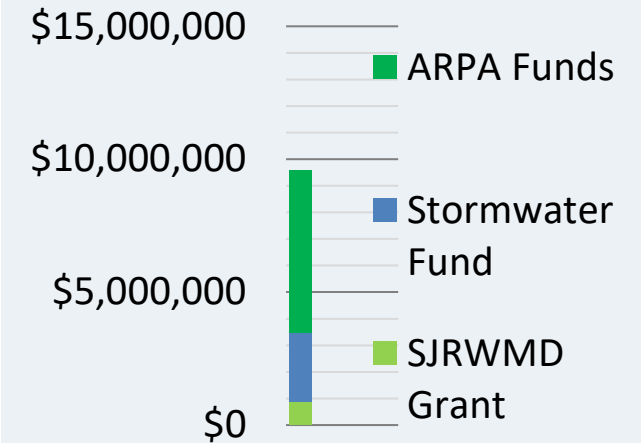
COPC Stormwater Fun	\$2,139,684
SJRWMD Grant	\$ 904,500
ARPA Funds	<u>\$6,193,955</u>
Total	\$9,238,139



PROJECT STATUS



PROJECT BUDGET



Consultants/Contractor Selection

Design Team

- Letter of Interest (LOI) invitation sent out March 2020
- DRMP selected for Feasibility Study/Design/Permitting
 - Feasibility Study began March 2020
 - Design/Permitting began July 2021

Construction

- Invitation to Bid (ITB) issued October 19th, 2022
 - Zero bids received
- ITB issued for second time on February 15th, 2023
 - One bid received, but significantly over Budget/Estimate
- ITB issued for third time on May 17th, 2023
 - Two bids received – Awarded to low bidder (Custom Built Marine Construction, Inc.)

Construction Engineering & Inspection

- RFSQ issued March 1, 2023
 - Awarded contract to DRMP, Inc.





Question/Answer Discussion

