



SOX
Erosion Solutions™

BIOENGINEERED LIVING SHORELINE & HILLSIDE EROSION CONTROL SYSTEMS

**Florida Stormwater
Association**

2019 Annual Conference



Emerging Technology

Presented by: Chad Bass
Operations Manager, Lake & Wetland Management

OUR COMPANY AND PRODUCTS



SOX Erosion Solutions™ manufactures and distributes a suite of patented, bioengineered erosion control solutions that are stable, long-lasting and compliant with all BMP's of "Living Shoreline" erosion control systems. SOX uses environmentally-focused methodology that gets high marks from engineers and environmentalists alike and is a cost-efficient and long-lasting solution to shoreline & hillside erosion.



SOX: The Numbers

19 – Years

40 - States

4 - Countries

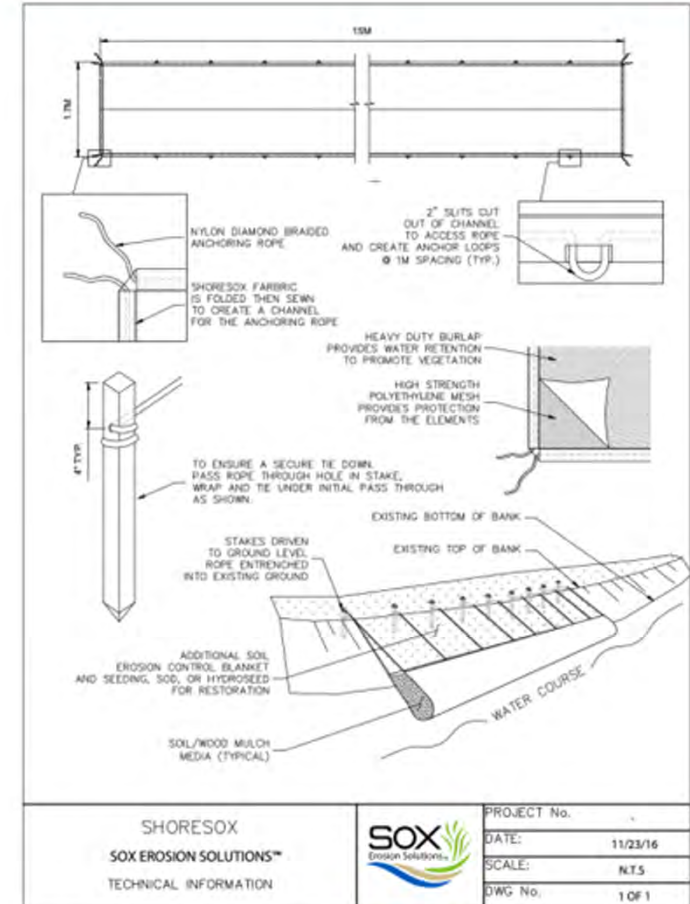
Miles of Stable Shorelines
and Hillsides Reclaimed



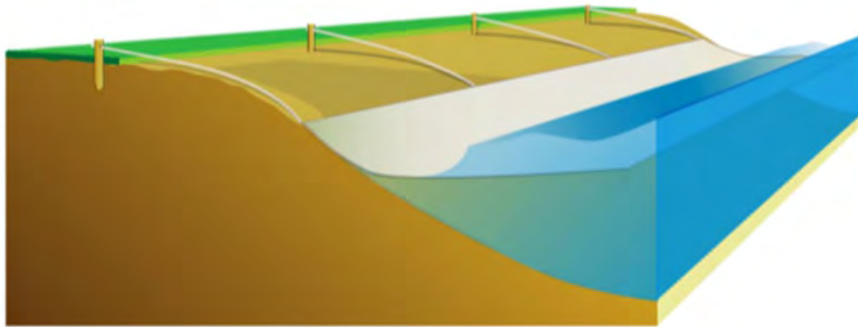
SOX PRODUCT INFORMATION



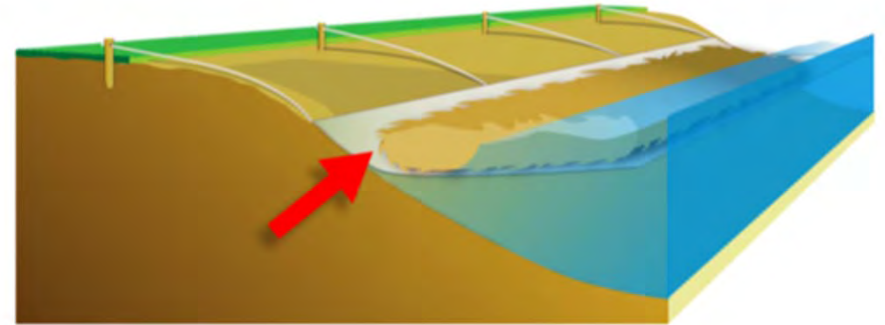
SOX Erosion Solutions™ offers a suite of innovative, patented, bioengineered erosion control solutions that arrests shoreline and hillside erosion immediately, while providing a foundation for vegetative restoration. SOX uses high density knitted polyethylene mesh that allows you to plant directly through or sod over without losing its structural integrity, unlike traditional woven polypropylene mesh systems.



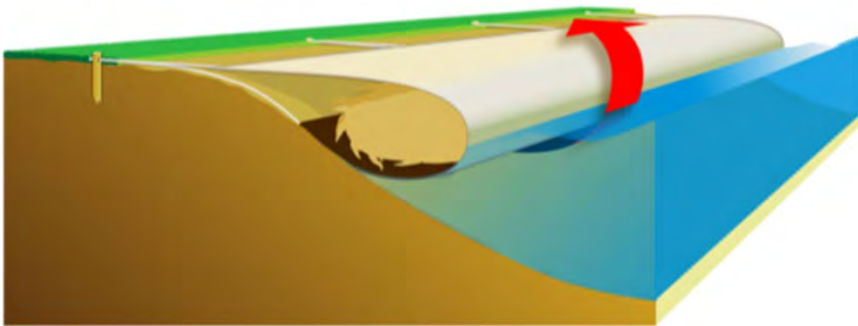
HOW SOX WORKS



STAKE AND SECURE ROPE TO ANCHORING CHANNEL EVERY 3 FEET



FILL KNITTED SOX MATERIAL WITH ORGANIC MEDIA (BLOW-IN COMPOST OR POND SEDIMENT RECOMMENDED)



ROLL AND SECURE SECOND SET OF ROPES FROM OPPOSITE CHANNEL TO THE STAKES & HAMMER STAKES BELOW SURFACE



SOD OR PLANT DIRECTLY OVER THE SOX KNITTED MESH (CAN SOD ALL THE WAY TO THE WATERS EDGE)

MUNICIPAL PROJECTS



GOLF COURSES & COMMUNITIES



Redstick Golf Club





CITY OF PALM COAST
BA1-CANAL BANK
RESTORATION VIDEO

When a canal and stormwater structure presented unacceptable risks to people and wildlife, the City of Palm Coast and the St. Johns River Water Management District in Florida evaluated the options to reconstruct the steep banks of the canal and the embedded culvert structure.



BEFORE



DURING

CITY OF PALM COAST – BA-1 CANAL



AFTER

CITY OF PALM COAST USING SOX NOT ROCKS



CITY OF LAKELAND – LAKE MORTON



CITY OF LAKELAND – LAKE MORTON



BEFORE



AFTER

HUNTERS CREEK – ORANGE COUNTY, FL



OAK HAMMOCK – LAKELAND, FL



BEFORE



AFTER

NO SWIMMING
ALLIGATORS,
SNAKES INHABIT
THESE WATERS.
DO NOT FEED
OR APPROACH
ALLIGATORS.

HUNTERS CREEK – ORANGE COUNTY, FL



BEFORE



AFTER

L.W.D.D. CANAL RESTORATION



BEFORE



DURING



AFTER



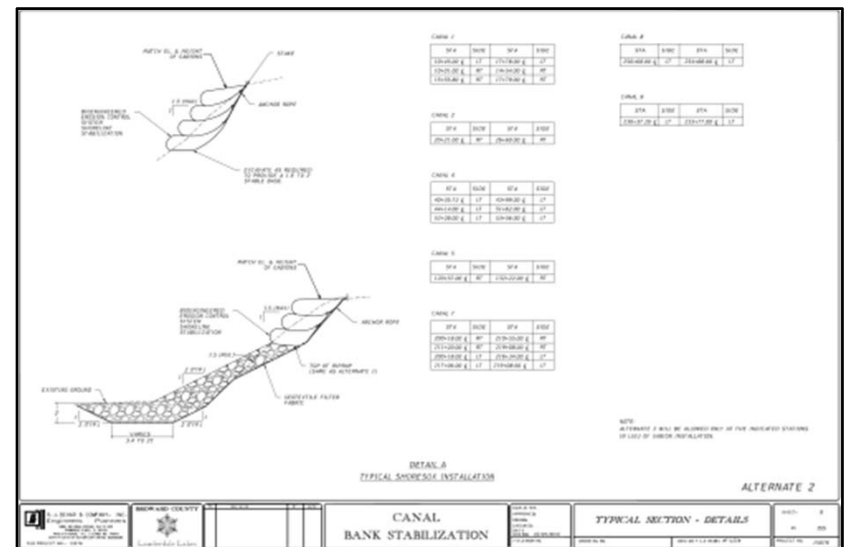
CITY OF LAUDERDALE LAKES



BEFORE



AFTER



CITY OF CORAL SPRINGS HURRICANE RELIEF PROJECT





STORMWATER RETENTION POND OUT FLOW RESTORATION



AUGUST 2018



MARCH 2019



OVER 28 MILLION GALLONS OF WATER FLOWED THROUGH THE OUT FLOW CULVERT PIPE IN 7 MONTHS
MOVED THE ROCKS, NOT THE **SOX!**

CITY OF PUNTA GORDA – SEAWALL REINFORCEMENT



CITY OF PUNTA GORDA – SEAWALL REINFORCEMENT



INDIAN RIVER LAGOON RESTORATION





MANATEE GRAZING ON VEGETATION THAT WAS PLANTED THROUGH SOX



Creating Living Shorelines
Using Eco-Friendly
SOX Erosion Solutions





PLANT DIRECTLY THROUGH SOX HIGH DENSITY KNITTED MESH



SOX HAS PLANT-THROUGH KNITTED MESH TECHNOLOGY



SOX HAS PLANT-THROUGH KNITTED MESH TECHNOLOGY



SOX
Erosion Solutions™

Q&A

THANK YOU FOR JOINING US!

WWW.SOXEROSION.COM | 833.222.4SOX