



StormTrap®

MODULAR CONCRETE
STORMWATER MANAGEMENT



SiteSaver® Treatment Solutions

Emerging Technologies – FSA Conference 2022

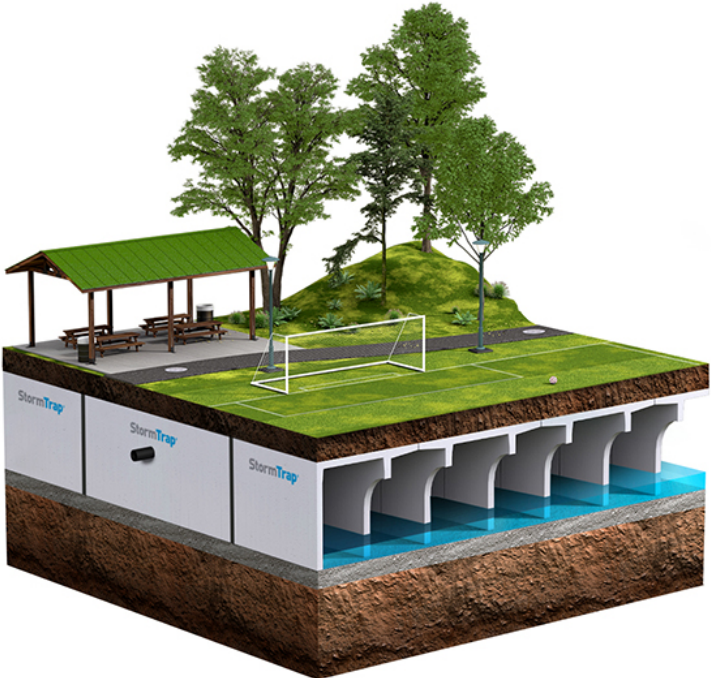
Sean Agans - General Sales Manager - Southeast



Stormwater Management Solutions



Detention



Retention

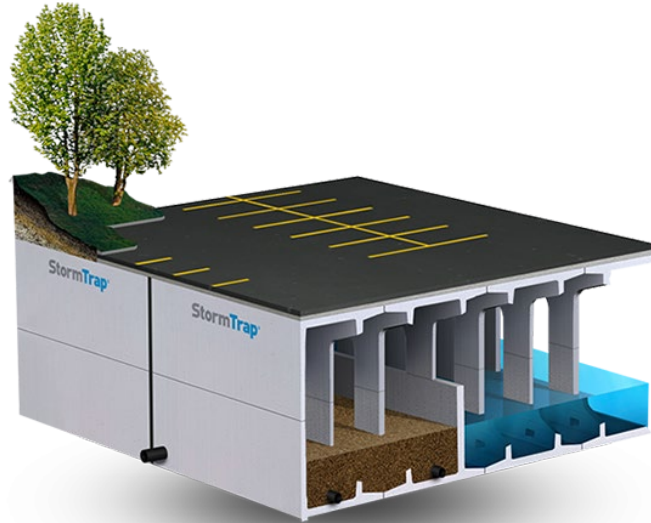


Stormwater Management Solutions



Stormwater LID

Rainwater Harvesting
Infiltration
Biofiltration
Pervious Surfaces



Treatment

Filtration
Oil & Water Separation
Sedimentation
Trash & Debris Removal



Treatment Train

Pre-treatment
Storage
Filtration



SiteSaver®

SiteSaver is a unique hydrodynamic separator that utilizes trash containment devices, inclined plate technology and baffles to capture and easily remove trash and debris, floatables, hydrocarbons and sediment from waterways



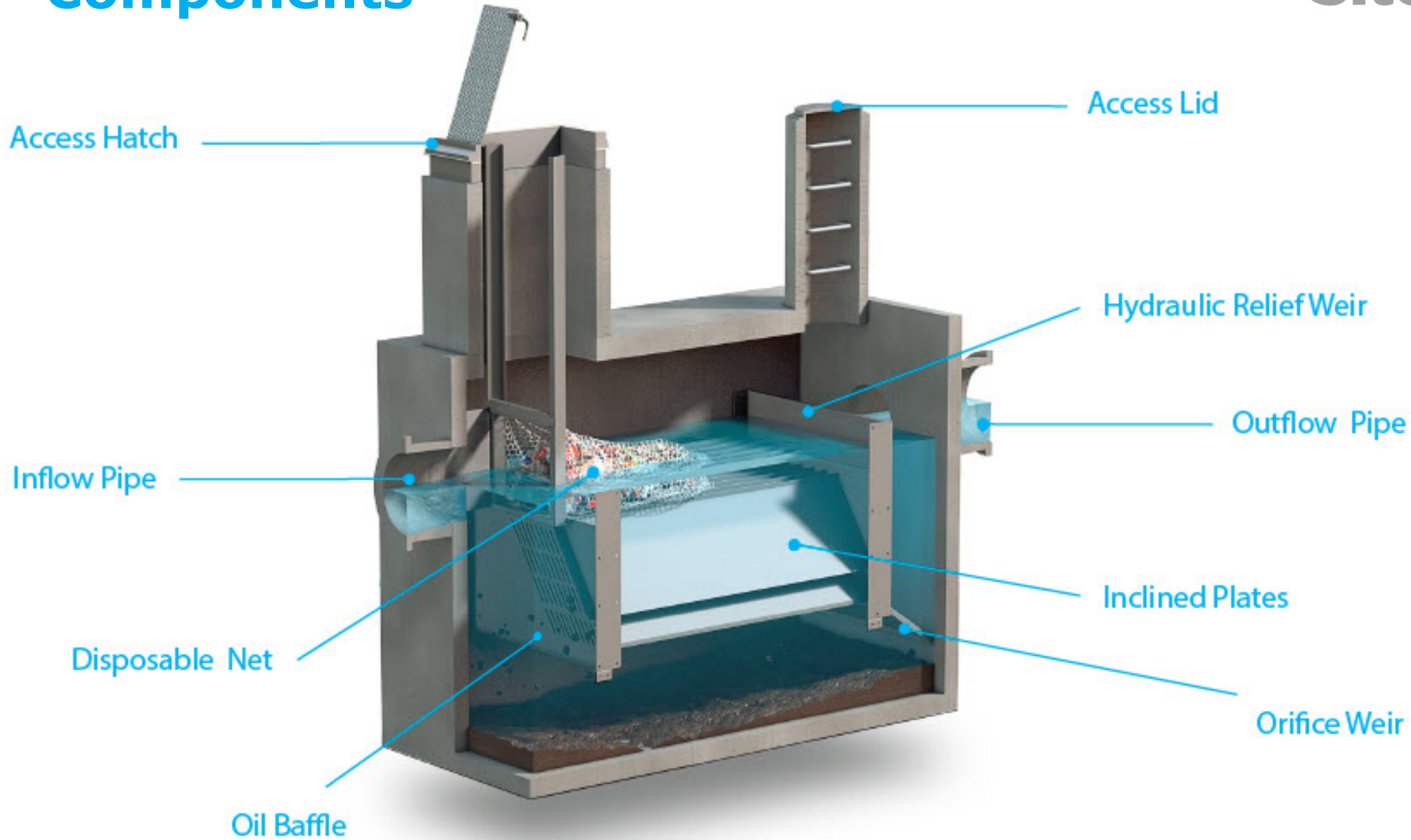
Verified



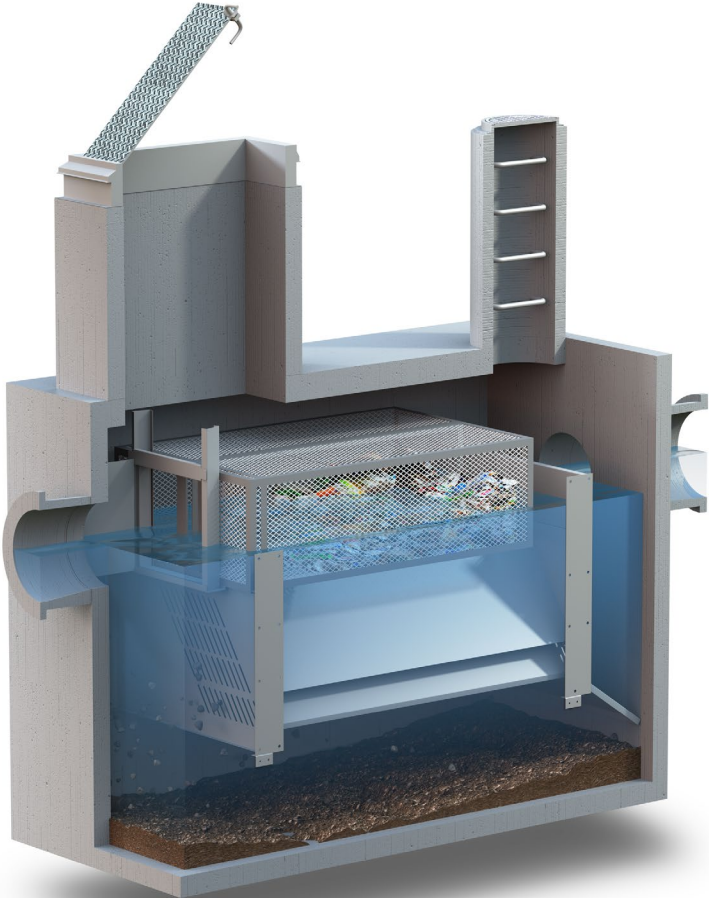
Certified HDS

Components

SiteSaver®



Components Net/ Basket Configurations



Flow Events

SiteSaver®



Typical Flow



High Flow



Nets/Baskets vs. Vertical Screens

Nets/Baskets

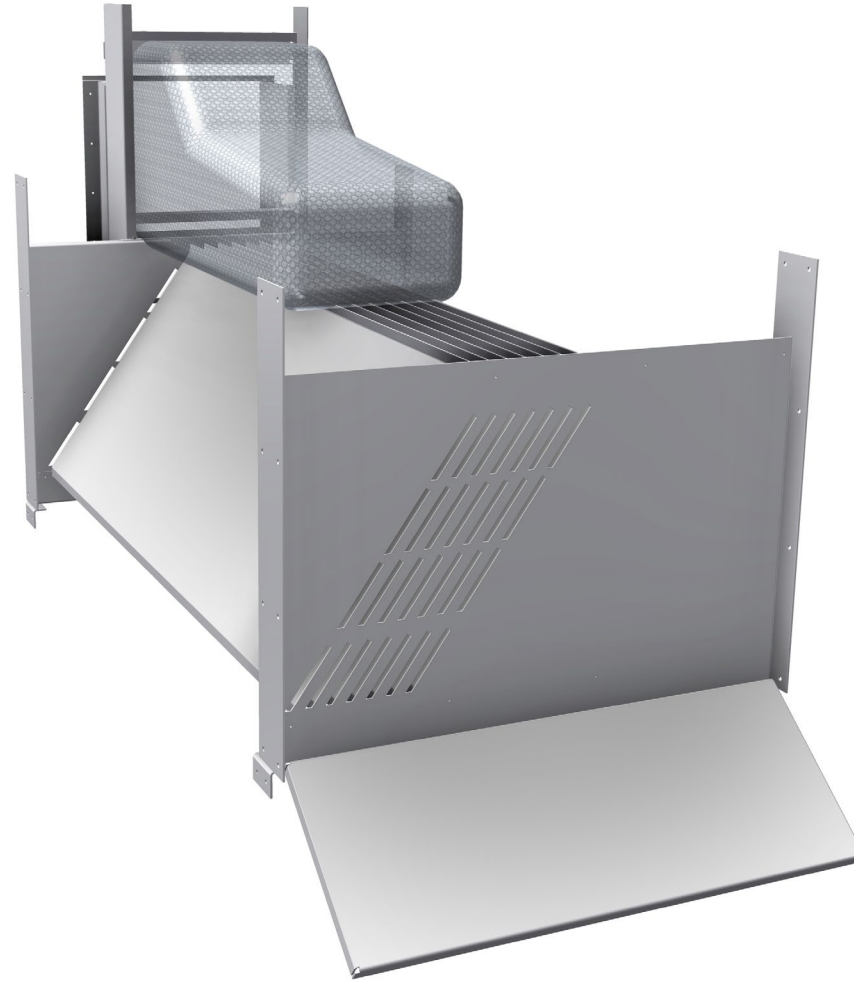


Screens



Innovative Components Inclined Plates

- Small footprint (stacked cells)
- Lower installation cost
- Self-cleaning cells
- Easy placement/design

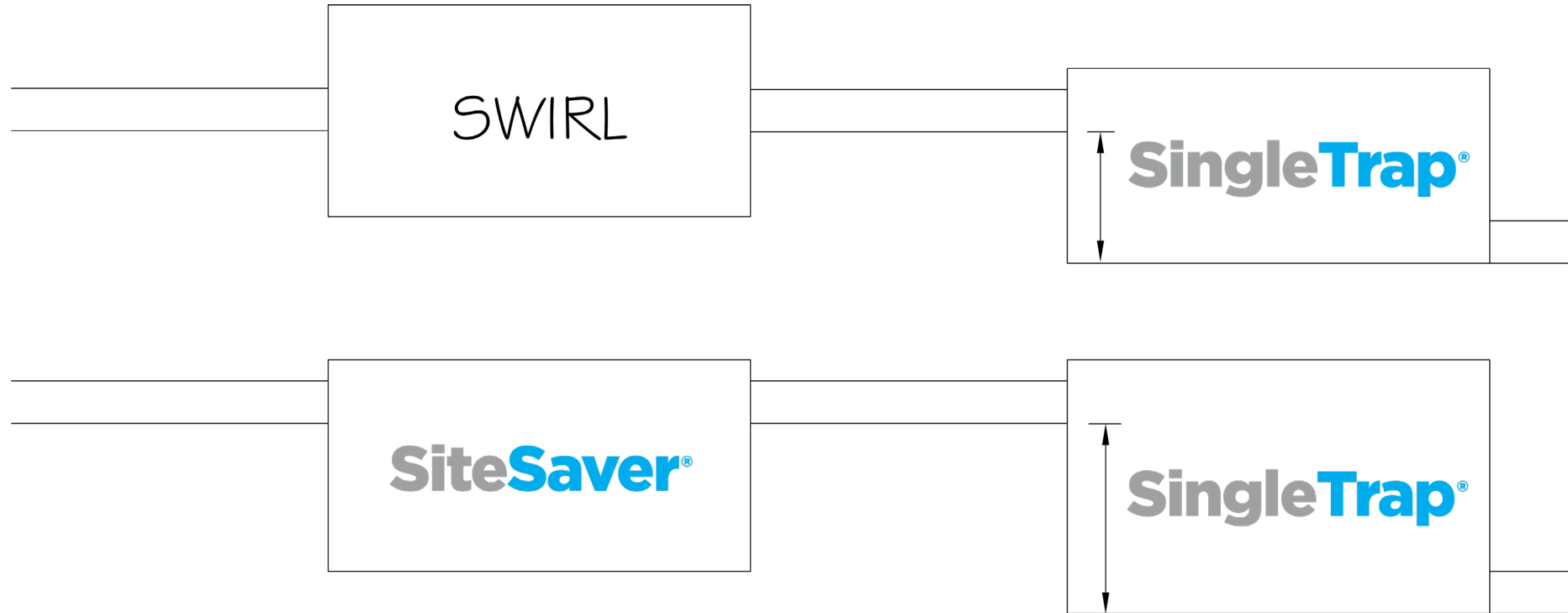


SiteSaver®



Minimal Head Loss

SiteSaver®



- Standard design for head loss shall not exceed 4" throughout the entire water quality device



SiteSaver Approvals



Verified



Certified HDS



SiteSaver Treatment Efficiencies

SiteSaver STSS Flow Rates and Removal Efficiencies

STSS – Model	NJDEP Testing	NJCAT Coarse Particle Test	OK-110	SPS 125µm	SPS 175µm
STSS - 4	4.32 CFS	4.32 CFS	2.96 CFS	4.96 CFS	9.72 CFS
STSS - 7	7.56 CFS		5.18 CFS	8.68 CFS	17.01 CFS
STSS - 12	12.96 CFS		8.87 CFS	14.88 CFS	29.17 CFS
STSS - 18	19.44 CFS		13.31 CFS	22.32 CFS	43.75 CFS

D-50	48	172	110	125	175
Removal %	50%	98%	80%	80%	80%



Verified



Certified HDS



Installation

SiteSaver®



Maintenance

SiteSaver Net Replacement / Basket Cleaning





Case Study

Second Street Youth Center – Plainfield, NJ

Site Specific Data

Peak Flow Rate = 32.5 CFS

Water Quality Flow = 4.06 CFS

Design sediment requirement:
50% TSS (NJDEP)

Model = STSS-4



Second Street Youth Center





Site Specific Data

Peak Flow Rate: 32.5 CFS

Water Quality Flow: 2.95 CFS | 8.86 CFS

Design Sediment Requirement: 80% TSS

Model = 1 STSS-4 and 2 STSS 12

Case Study

LATC Modernization



LATC Modernization





Case Study

Cottonwood Drive Widening Project



Site Specific Data

Peak Flow Rate = 12 CFS | 22 CFS

Water Quality Flow = 2.5 CFS | 4.9 CFS

Design Sediment Requirement: 80% TSS

Model = STSS-4 and STSS-7



Cottonwood Drive Widening Project



StormTrap Complete Services



Design

- Flow calculations
- Budget estimate for the system & installation
- Complete set of drawing
- Written CSI specification
- 24 – 48 hour turnaround



Installation

- Pre-construction meeting
- Predetermined shipping sequence / schedule
- Project Manager on site during installation
- 6 – 8 week lead time



Maintenance Services

- Maintenance services available for all products utilizing netting technology
- Replacement nets
- System Monitoring



StormTrap.com - Stay informed about our solutions

Products & Solutions

SINGLETRAP® PROJECT PROFILES



LINCOLN PARK ZOO

The project involves the installation of a stormwater detention system in Lincoln Park Zoo, Chicago...

[VIEW PROJECT](#)



SPEEDWAY, INC.

A twenty two pieces SingleTrap detention system was installed underneath a Speedway Inc facility to...

[VIEW PROJECT](#)

Request a Lunch & Learn

Lunch & Learn

DISCOVER SMART STORMWATER SOLUTIONS

Schedule a Lunch & Learn presentation to learn about StormTrap's broadest stormwater solutions. A StormTrap Sales Engineer will come to your office to deliver an educational presentation on how our products provide cost-effective stormwater management and protect water quality in an array of markets through a variety of applications and treatment options.



StormTrap Stormwater Management Treatment System - US Bank Stadium West Plaza - Minneapolis, MN
Robert Daw

Request a Design & Budget



[PRODUCTS](#) - [SOLUTIONS](#) - [MARKETS](#) - [COMPANY](#) - [RESOURCES](#) - [CONTACT](#)

TREATMENT



TREATMENT

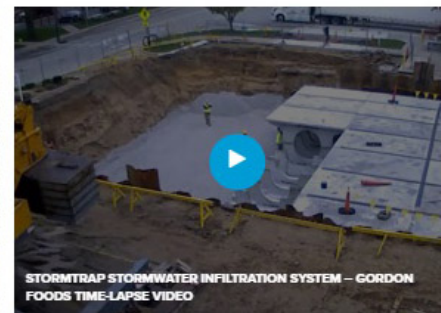
Improve water quality
Remove trash and floatables, sediment,
hydrocarbons, nutrients, heavy metals and other
common pollutants

[View Solution](#)

View Project Profiles & Videos



STORMTRAP DOUBLETRAP ANIMATION



STORMTRAP STORMWATER INFILTRATION SYSTEM - GORDON FOODS TIME-LAPSE VIDEO

Brochures & Specifications

DOUBLETRAP® DOCS

[HYDROCAD SUPPORTED PRODUCT](#)

[SAMPLE DRAWINGS DOUBLETRAP DETENTION](#)

[SAMPLE DRAWING RAINWATER HARVESTING](#)

[SAMPLE DRAWING DOUBLETRAP SEDIMENTATION](#)

[SAMPLE DRAWING OIL/WATER SEPARATOR](#)



Questions?

Thank you

Sean Agans - General Sales Manager - Southeast

sagans@stormtap.com

646-242-9956

